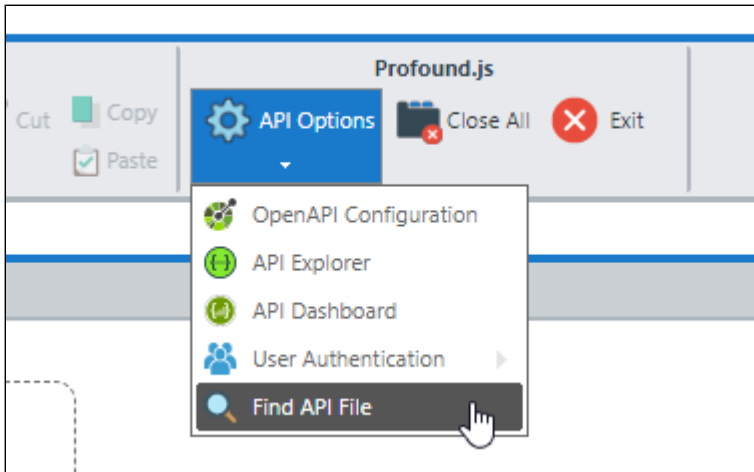


Find and Maintain APIs

Your API definitions are organized into a set of JSON files. When the number of files is small, it is easy to find the appropriate API file. You can simply find it in the File tree or use the Open option on the Home Ribbon.

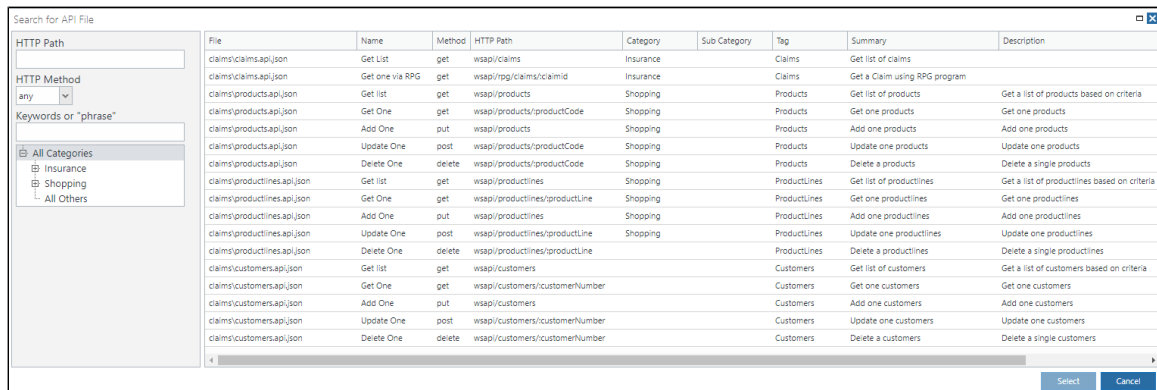
But, eventually, both the number of APIs and API files may become less manageable. This is where the **Find API File** tool is useful.

1. Navigate to the Profound.js IDE
2. On the Home Ribbon, click API Options and choose Find API File



From here, you can use a combination of filters to find the APIs that you have previously defined.

Once you find your API, double click it and that API will be shown within the API Designer.



Search for API File

HTTP Path:

HTTP Method: any

Keywords or "phrase":

All Categories

- Insurance
- Shopping
- All Others

File	Name	Method	HTTP Path	Category	Sub Category	Tag	Summary	Description
claims/claims.api.json	Get List	get	wsapi/claims	Insurance		Claims	Get list of claims	
claims/claims.api.json	Get one via RPG	get	wsapi/rpg/claims/claimid	Insurance		Claims	Get a Claim using RPG program	
claims/products.api.json	Get list	get	wsapi/products	Shopping		Products	Get list of products	Get a list of products based on criteria
claims/products.api.json	Get One	get	wsapi/products/productCode	Shopping		Products	Get one products	Get one products
claims/products.api.json	Add One	put	wsapi/products	Shopping		Products	Add one products	Add one products
claims/products.api.json	Update One	post	wsapi/products/productCode	Shopping		Products	Update one products	Update one products
claims/products.api.json	Delete One	delete	wsapi/products/productCode	Shopping		Products	Delete a products	Delete a single products
claims/productlines.api.json	Get list	get	wsapi/productlines	Shopping		ProductLines	Get list of productlines	Get a list of productlines based on criteria
claims/productlines.api.json	Get One	get	wsapi/productlines/productLine	Shopping		ProductLines	Get one productlines	Get one productlines
claims/productlines.api.json	Add One	put	wsapi/productlines	Shopping		ProductLines	Add one productlines	Add one productlines
claims/productlines.api.json	Update One	post	wsapi/productlines/productLine	Shopping		ProductLines	Update one productlines	Update one productlines
claims/productlines.api.json	Delete One	delete	wsapi/productlines/productLine	Shopping		ProductLines	Delete a productlines	Delete a single productlines
claims/customers.api.json	Get list	get	wsapi/customers	Customers		Customers	Get list of customers	Get a list of customers based on criteria
claims/customers.api.json	Get One	get	wsapi/customers/customerNumber	Customers		Customers	Get one customers	Get one customers
claims/customers.api.json	Add One	put	wsapi/customers	Customers		Customers	Add one customers	Add one customers
claims/customers.api.json	Update One	post	wsapi/customers/customerNumber	Customers		Customers	Update one customers	Update one customers
claims/customers.api.json	Delete One	delete	wsapi/customers/customerNumber	Customers		Customers	Delete a customers	Delete a single customers

Select Cancel